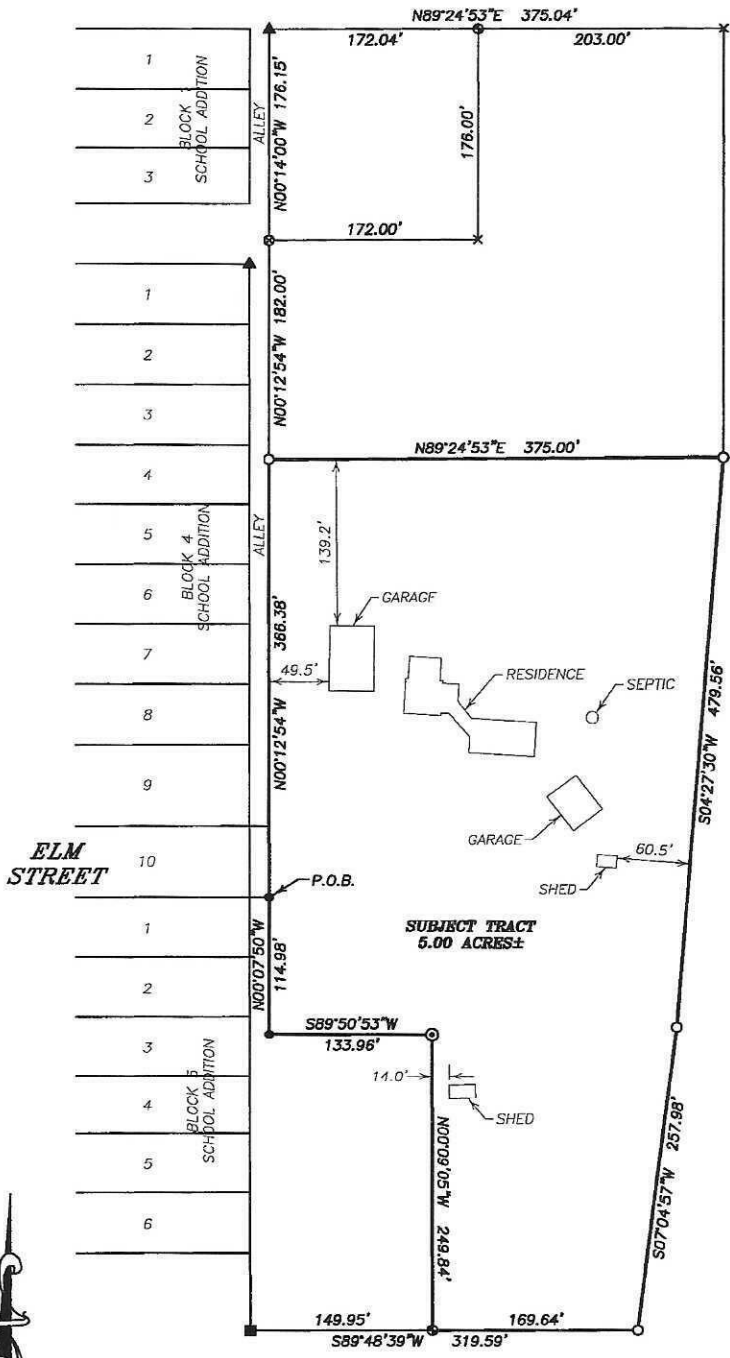


KAUTH ADMINISTRATIVE PLAT
OF A LOT SPLIT
IN PART OF THE W1/2 OF THE NE1/4 OF SECTION 11, T30N, R3W
OF THE 6TH P.M., KNOX COUNTY, NEBRASKA.



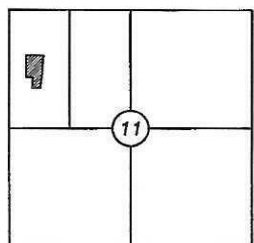
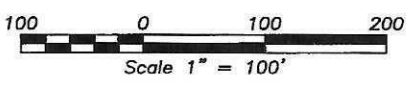
NW1/4
11 30-3W

LEGEND

- SET 5/8" REBAR WITH L.S. CAP STAMPED "SD 5349 NE 708 BRANDT"
- FOUND 5/8" REBAR WITH L.S. CAP STAMPED "SKROCH LS 657"
- ⊗ FOUND CHISELED "X" IN CONCRETE
- FOUND 5/8" REBAR WITH L.S. CAP STAMPED "RLS 312"
- ⊙ FOUND L.S. CAP ILLEGIBLE
- ▲ FOUND IRON PIPE
- ⊕ FOUND 1/2" REBAR
- × CALCULATED CORNER

NOTE:
BASIS OF BEARING
BY GPS OBSERVATION

PREPARED BY:
BRANDT LAND SURVEYING
1202 WILLOWDALE ROAD
YANKTON, SD 57078
(605) 665-8455



LOCATION (N.T.S.)
11-30-3W