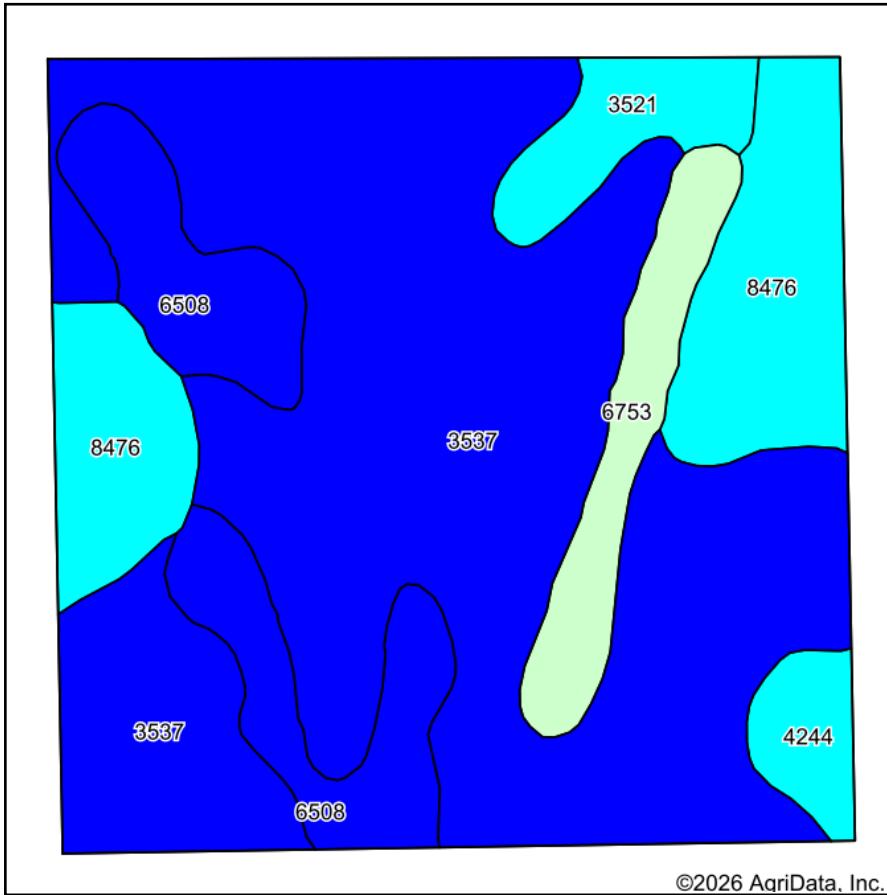
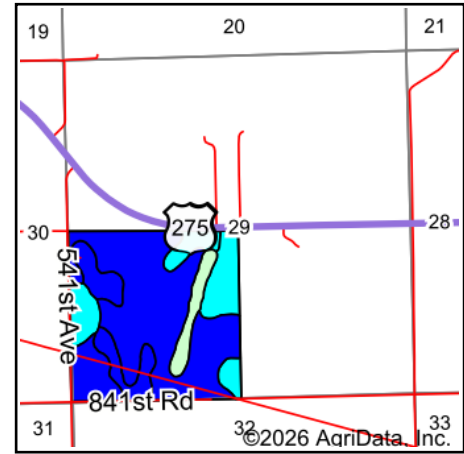


# Soils Map



Soils data provided by USDA and NRCS.



State: **Nebraska**  
 County: **Madison**  
 Location: **29-24N-3W**  
 Township: **Deer Creek**  
 Acres: **156.16**  
 Date: **1/17/2026**



Maps Provided By:



Area Symbol: NE119, Soil Area Version: 24

Code	Soil Description	Acres	Percent of field	SRPG Legend	Non-Irr Class *c	Irr Class *c	SRPG	Grain sorghum Bu	Grain sorghum Irrigated Bu	*n NCCPI Overall	*n NCCPI Corn	*n NCCPI Small Grains	*n NCCPI Soybeans
3537	Gibbon silty clay loam, occasionally flooded	96.66	61.9%		Ilw	Ilw	52	87	116	71	49	52	71
8476	Gibbon-Gayville silty clay loams, occasionally flooded	21.68	13.9%		Ilw	Ilw	38	68	95	59	31	45	59
6508	Blendon fine sandy loam, 0 to 2 percent slopes	18.78	12.0%		Ils	Ile	60	59	107	64	64	54	56
6753	Nora silt loam, 2 to 6 percent slopes	8.83	5.7%		Ile	Ille				75	65	63	75
3521	Cass fine sandy loam, 0 to 2 percent slopes, occasionally flooded	6.31	4.0%		Ilw	Ilw	50	64	110	50	50	42	42
4244	Ord loam, occasionally flooded	3.90	2.5%		Ilw	Ilw	25	70	110	46	36	41	46
<b>Weighted Average</b>					<b>2.00</b>	<b>2.06</b>	<b>47.3</b>	<b>74.7</b>	<b>105.1</b>	<b>*n 67.2</b>	<b>*n 48.9</b>	<b>*n 51.2</b>	<b>*n 66</b>

\*n: The aggregation method is "Weighted Average using all components"

\*c: Using Capabilities Class Dominant Condition Aggregation Method

Soils data provided by USDA and NRCS.