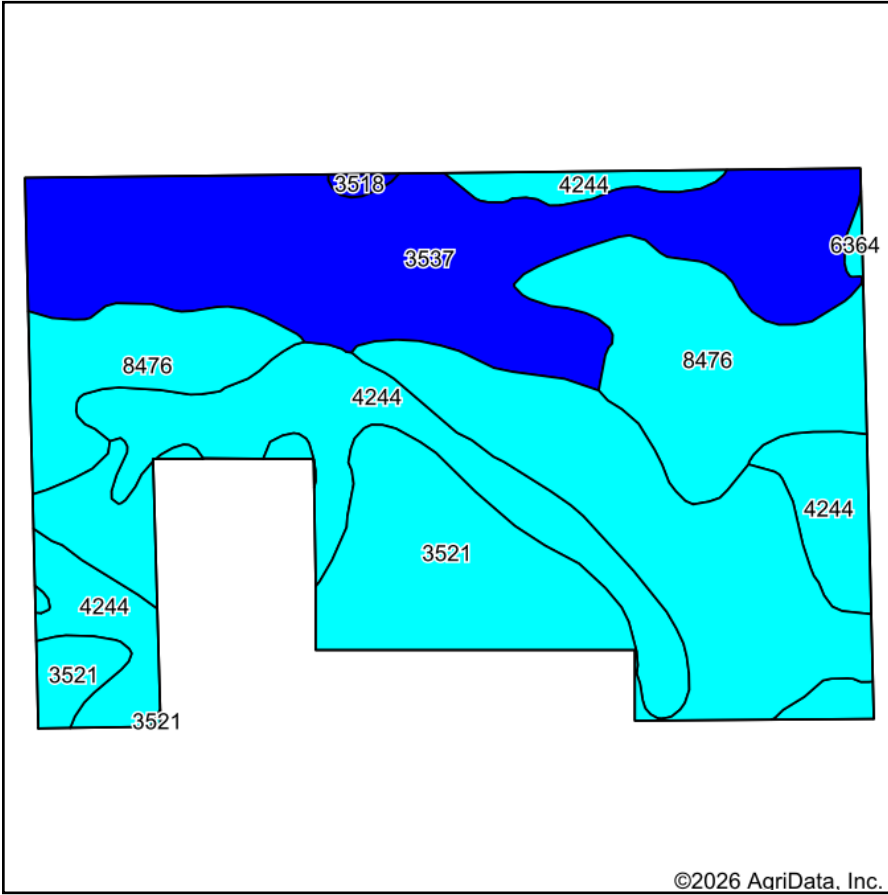
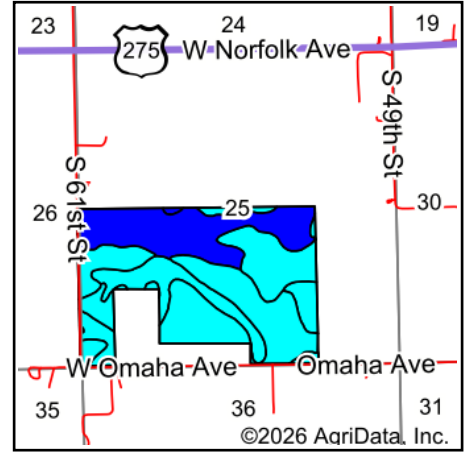


Soils Map



Soils data provided by USDA and NRCS.



State: **Nebraska**
 County: **Madison**
 Location: **25-24N-2W**
 Township: **Valley**
 Acres: **204.61**
 Date: **1/16/2026**



Maps Provided By:



Area Symbol: NE119, Soil Area Version: 24

Code	Soil Description	Acres	Percent of field	SRPG Legend	Non-Irr Class *c	Irr Class *c	SRPG	Grain sorghum Bu	Grain sorghum Irrigated Bu	*n NCCPI Overall	*n NCCPI Corn	*n NCCPI Small Grains	*n NCCPI Soybeans
3521	Cass fine sandy loam, 0 to 2 percent slopes, occasionally flooded	66.74	32.6%		Ilw	Ilw	50	64	110	50	50	42	42
3537	Gibbon silty clay loam, occasionally flooded	57.10	27.9%		Ilw	Ilw	52	87	116	71	49	52	71
4244	Ord loam, occasionally flooded	41.63	20.3%		Ilw	Ilw	25	70	110	46	36	41	46
8476	Gibbon-Gayville silty clay loams, occasionally flooded	38.01	18.6%		Ilw	Ilw	38	68	95	59	31	45	59
3518	Lamo silty clay loam, 0 to 2 percent slopes, occasionally flooded	0.61	0.3%		Ilw	Ilw	54			77	68	58	77
6364	Obert silty clay loam, frequently ponded	0.52	0.3%		Vlw		24			26	7	26	11
Weighted Average					2.01	*-	43.2	72	108.3	*n 56.7	*n 43.3	*n 45.2	*n 54.1

*n: The aggregation method is "Weighted Average using all components"

*c: Using Capabilities Class Dominant Condition Aggregation Method

*- Irr Class weighted average cannot be calculated on the current soils data due to missing data.

Soils data provided by USDA and NRCS.