

Tract Number : 7117

Description : E2SW Part S2SE 23-26-2 NENW 26-26-2
FSA Physical Location : NEBRASKA/PIERCE
ANSI Physical Location : NEBRASKA/PIERCE
BIA Unit Range Number :
HEL Status : HEL field on tract.Conservation system being actively applied
Wetland Status : Wetland determinations not complete
WL Violations : None
Owners : MIN-NEB LLC
Other Producers : None
Recon ID : 31-139-2011-36

TRACT 5

Tract Land Data

| Farm Land | Cropland | DCP Cropland | WBP | EWP | WRP | GRP | Sugarcane |
|--------------------|--------------------|------------------------|----------------|------|------|----------------------|-----------|
| 125.08 | 114.93 | 114.93 | 0.00 | 0.00 | 0.00 | 0.00 | 0.0 |
| State Conservation | Other Conservation | Effective DCP Cropland | Double Cropped | CRP | MPL | DCP Ag. Rel Activity | SOD |
| 0.00 | 0.00 | 114.93 | 0.00 | 0.00 | 0.00 | 0.00 | 0.00 |

DCP Crop Data

| Crop Name | Base Acres | CCC-505 CRP Reduction Acres | PLC Yield |
|--------------|---------------|-----------------------------|-----------|
| Corn | 105.90 | 0.00 | 157 |
| TOTAL | 105.90 | 0.00 | |

NOTES

Empty box for notes.

24-26-2W

23-26-2W

210.15

CORN ↑
GR 5-4
100%

T 7117

1B 17.02 NI

1
114.93
HEL

IC 77.82
ILL

Text

22-26-2W

1B 9.0 NI

210.15

2
5-4 2
GR 100%

T 7117

1
114.93
HEL

1D 11.02 NI

25-26-2W

26-26-2W

27-26-2W

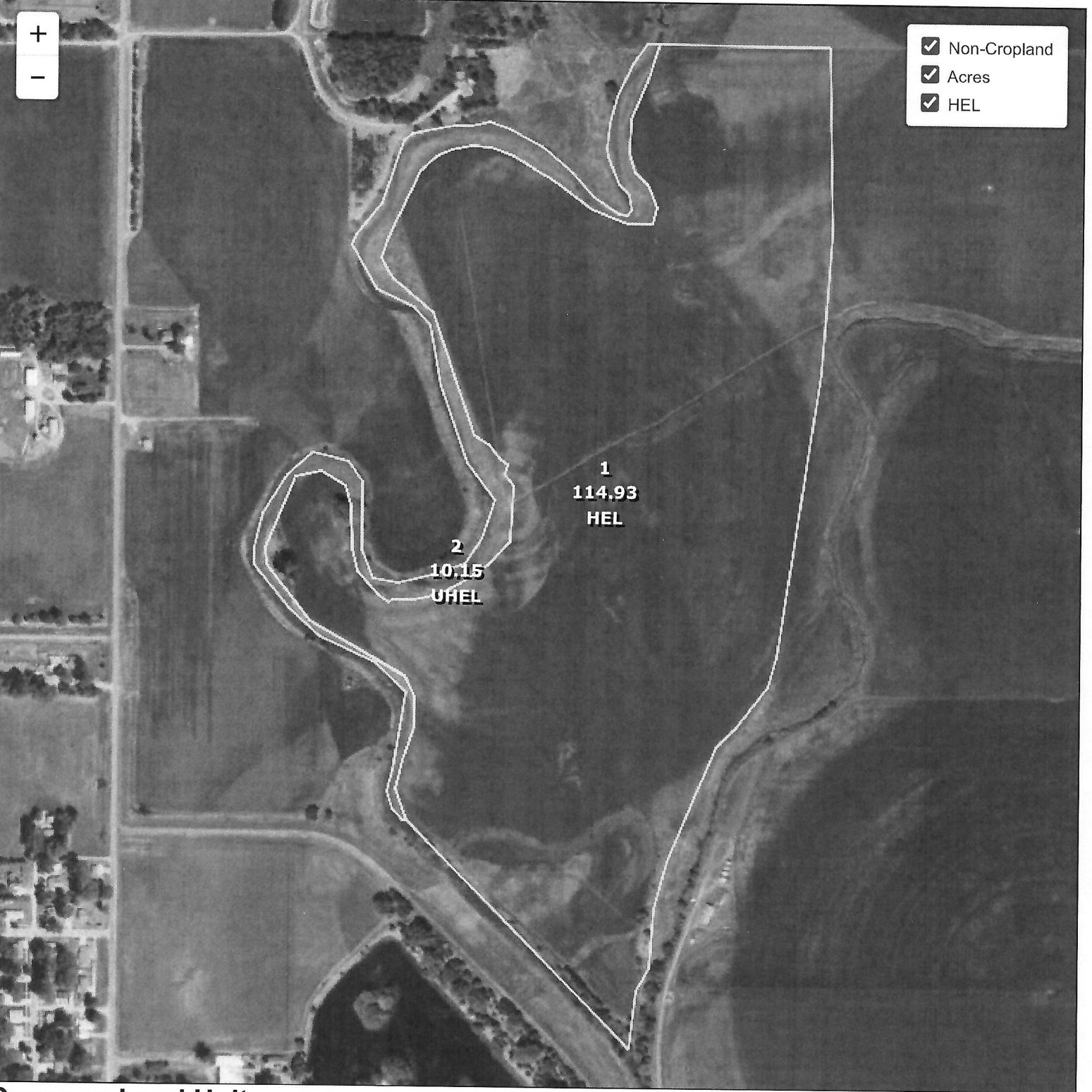
Text

United States Department of Agriculture (USDA) Farm Service Agency (FSA) maps are for FSA Program administration only. This map does not represent a legal survey or reflect actual ownership; rather it depicts the information provided directly from the producer and/or National Agricultural Imagery Program (NAIP) imagery. The producer accepts the data 'as is' and assumes all risks associated with its use. USDA-FSA assumes no responsibility for actual or consequential damage incurred as a result of any user's reliance on this data outside FSA Programs. Wetland identifiers do not represent the size, shape, or specific determination of the area. Refer to your original determination (CPA-026 and attached maps) for exact boundaries and determinations or contact USDA Natural Resources Conservation Service (NRCS).

USDA Pierce County, Nebraska



- Non-Cropland
- Acres
- HEL



Common Land Unit

- Cropland
- Non-cropland
- CRP

2025 Crop Year

Farm **6304**
Tract **7117**

- Wetland Determination Identifiers
- Restricted Use
 - Limited Restrictions
 - Exempt from Conservation Compliance Provisions

