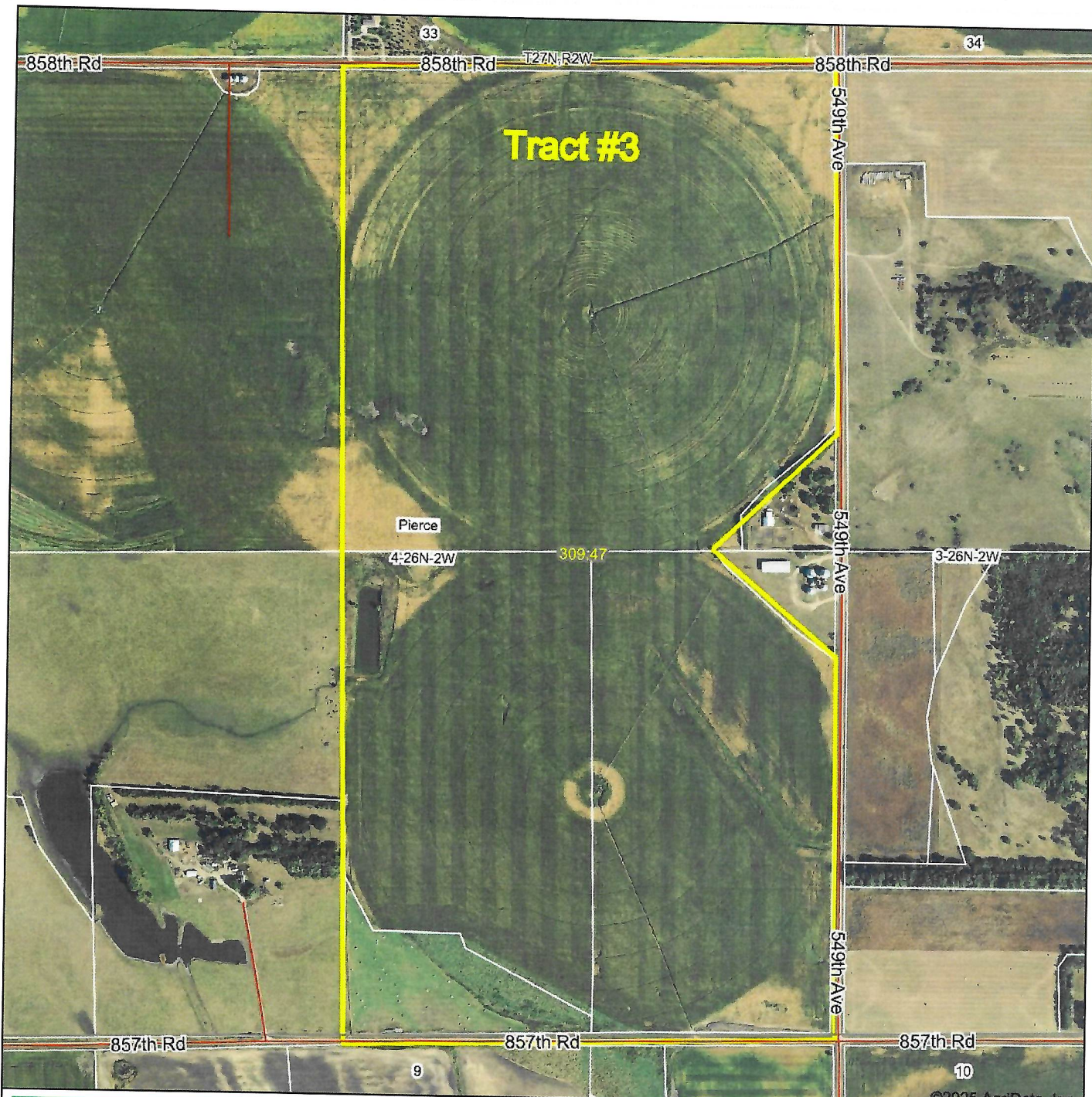
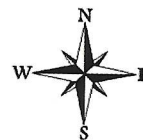


Aerial Map



©2025 AgriData, Inc.

Boundary Center: 42° 15' 25.64, -97° 32' 53.87



Ag Land Realty, LLC

Real Estate Land Management Auctions

Maps Provided By:



© AgriData, Inc. 2023

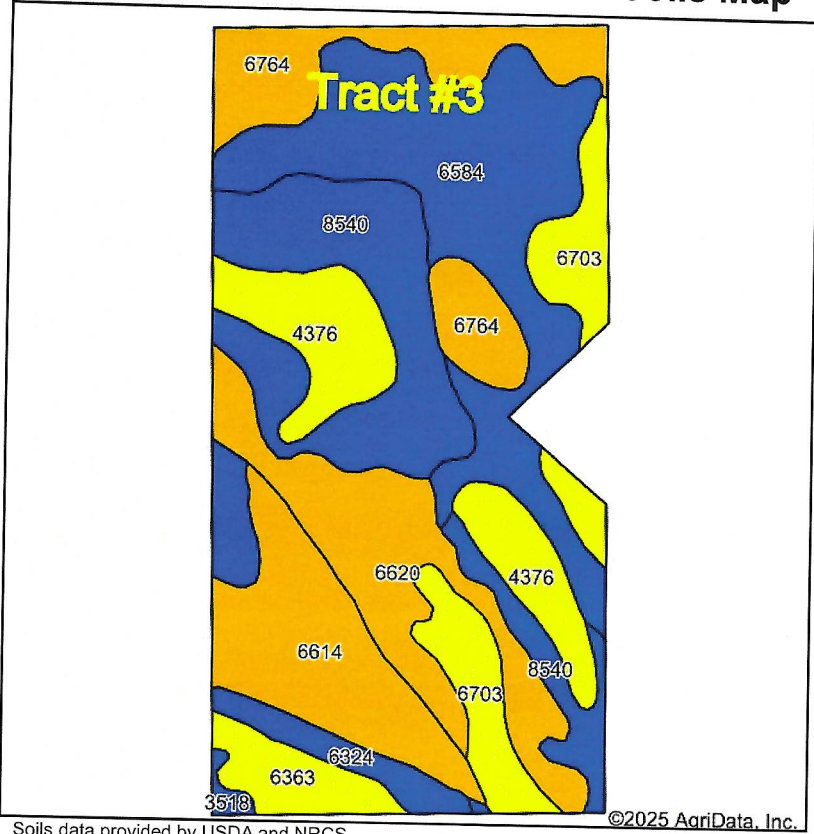
www.AgriDataInc.com

4-26N-2W
Pierce County
Nebraska

8/12/2025

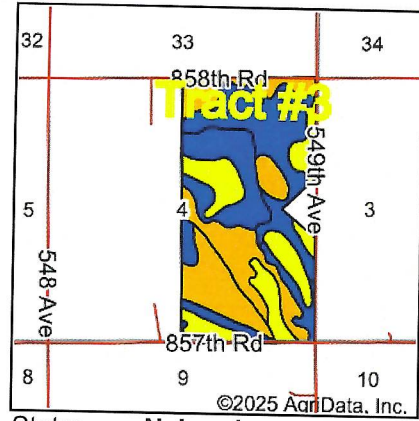
Field borders provided by Farm Service Agency as of 5/21/2008.

Soils Map



Soils data provided by USDA and NRCS.

©2025 AgriData, Inc.



©2025 AgriData, Inc.

State: **Nebraska**
 County: **Pierce**
 Location: **4-26N-2W**
 Township: **Pierce**
 Acres: **309.47**
 Date: **8/12/2025**



Maps Provided By:



© AgriData, Inc. 2023

www.AgriDataInc.com



Area Symbol: NE139, Soil Area Version: 23

Code	Soil Description	Acres	Percent of field	Non-Irr Class Legend	Non-Irr Class *c	Irr Class *c	Grain sorghum Bu	Grain sorghum Irrigated Bu	*n NCCPI Overall	*n NCCPI Corn	*n NCCPI Small Grains	*n NCCPI Soybeans
6584	Ortello fine sandy loam, terrace, 0 to 2 percent slopes	68.18	22.0%		Ile	Ile			52	45	52	43
8540	Ovina fine sandy loam, rarely flooded	53.59	17.3%		IIw	IIw			60	48	57	60
6620	Bazile soils, 1 to 6 percent slopes	38.13	12.3%		IIIe	IIIe			50	46	50	42
6614	Bazile silt loam, 1 to 6 percent slopes	34.40	11.1%		IIIe	IIIe			61	54	61	54
6764	Hadar loamy fine sand, 2 to 6 percent slopes	31.81	10.3%		IIIe	IIIe	4	5	59	59	52	51
4376	Loup fine sandy loam, rarely flooded	30.23	9.8%		Vw				43	35	43	37
6703	Thurman loamy fine sand, 2 to 6 percent slopes	27.57	8.9%		IVe	IVe			51	51	41	34
6324	Coleridge silty clay loam, 0 to 2 percent slopes, occasionally flooded	13.56	4.4%		IIw	IIw			80	79	57	74
6363	Obert silt loam, 0 to 2 percent slopes, frequently ponded	10.58	3.4%		VIw				39	19	37	16

Soils data provided by USDA and NRCS.