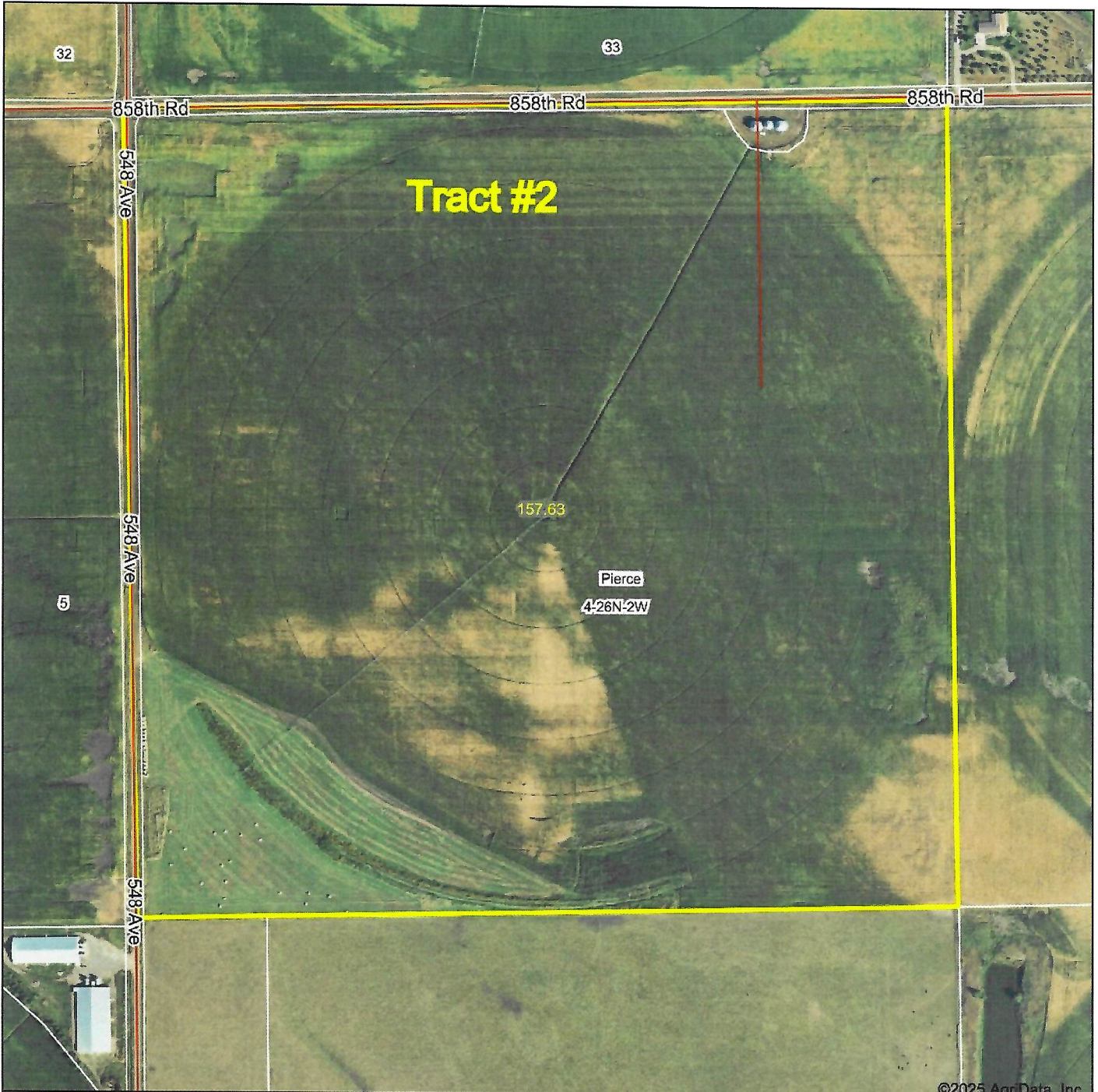


# Aerial Map



©2025 AgriData, Inc.

Boundary Center: 42° 15' 38.49, -97° 33' 29.03



**Ag Land Realty, LLC**

Real Estate Land Management Auctions

Maps Provided By:



© AgriData, Inc. 2023 www.AgriDataInc.com

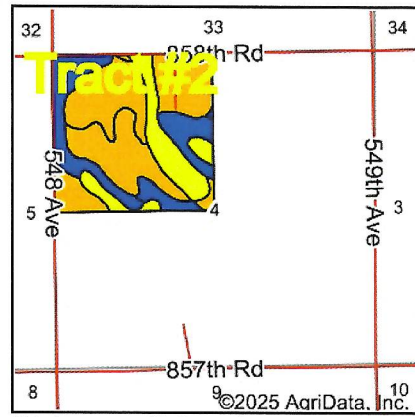
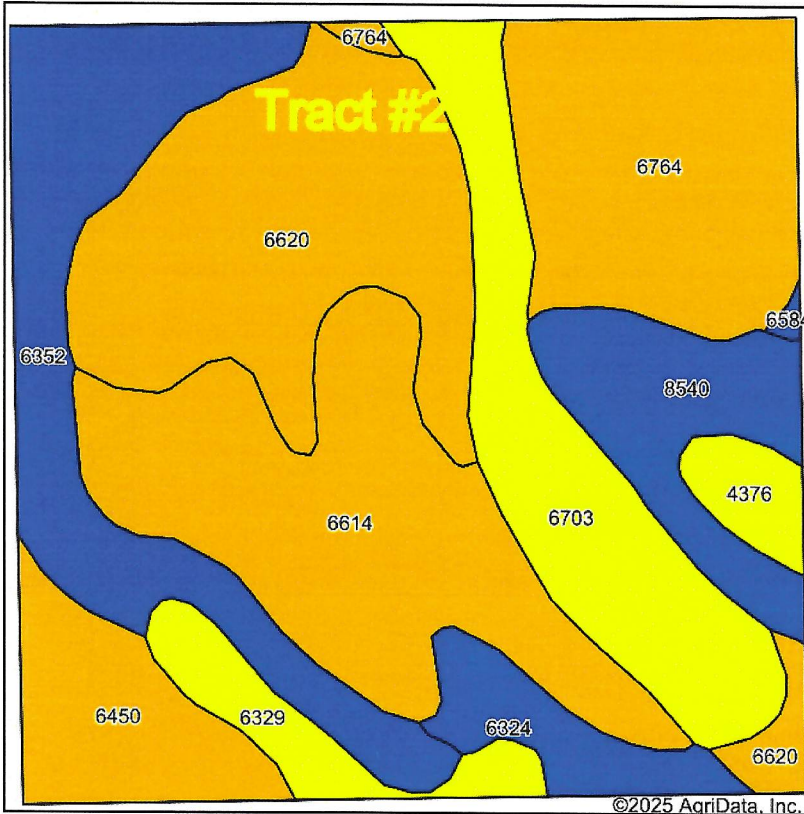
**4-26N-2W**  
**Pierce County**  
**Nebraska**



8/12/2025

Field borders provided by Farm Service Agency as of 5/21/2008.

# Soils Map



State: **Nebraska**  
 County: **Pierce**  
 Location: **4-26N-2W**  
 Township: **Pierce**  
 Acres: **157.63**  
 Date: **8/12/2025**



Soils data provided by USDA and NRCS.

©2025 AgriData, Inc.

Area Symbol: NE139, Soil Area Version: 23

| Code | Soil Description   | Acres | Percent of field | Non-Irr Class Legend | Non-Irr Class *c | Irr Class *c | Grain sorghum Bu | Grain sorghum Irrigated Bu | *n NCCPI Overall | *n NCCPI Corn | *n NCCPI Small Grains | *n NCCPI Soybeans |
|------|--|-------|------------------|----------------------|------------------|--------------|------------------|----------------------------|------------------|---------------|-----------------------|-------------------|
| 6620 | Bazile soils, 1 to 6 percent slopes                                    | 29.76 | 18.9%            |                      | IIIe             | IIIe         |                  |                            | 50               | 46            | 50                    | 42                |
| 6614 | Bazile silt loam, 1 to 6 percent slopes                                | 29.31 | 18.6%            |                      | IIIe             | IIIe         |                  |                            | 61               | 54            | 61                    | 54                |
| 6764 | Hadar loamy fine sand, 2 to 6 percent slopes                           | 22.17 | 14.1%            |                      | IIIe             | IIIe         | 4                | 5                          | 59               | 59            | 52                    | 51                |
| 6352 | Leshara silt loam, occasionally flooded                                | 21.83 | 13.8%            |                      | IIw              | IIw          |                  |                            | 68               | 55            | 58                    | 68                |
| 6703 | Thurman loamy fine sand, 2 to 6 percent slopes                         | 19.36 | 12.3%            |                      | IVe              | IVe          |                  |                            | 51               | 51            | 41                    | 34                |
| 8540 | Ovina fine sandy loam, rarely flooded                                  | 11.10 | 7.0%             |                      | IIw              | IIw          |                  |                            | 60               | 48            | 57                    | 60                |
| 6450 | Clamo silty clay, occasionally flooded                                 | 9.75  | 6.2%             |                      | IIIw             | IIIw         |                  |                            | 54               | 36            | 40                    | 54                |
| 6329 | Lawet loam, occasionally flooded                                       | 5.61  | 3.6%             |                      | IVw              | IVw          |                  |                            | 66               | 45            | 45                    | 66                |
| 6324 | Coleridge silty clay loam, 0 to 2 percent slopes, occasionally flooded | 5.59  | 3.5%             |                      | IIw              | IIw          |                  |                            | 80               | 79            | 57                    | 74                |
| 4376 | Loup fine sandy loam, rarely flooded                                   | 2.89  | 1.8%             |                      | Vw               |              |                  |                            | 43               | 35            | 43                    | 37                |

Soils data provided by USDA and NRCS.