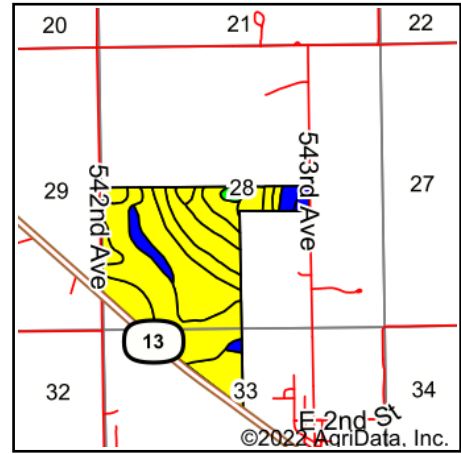
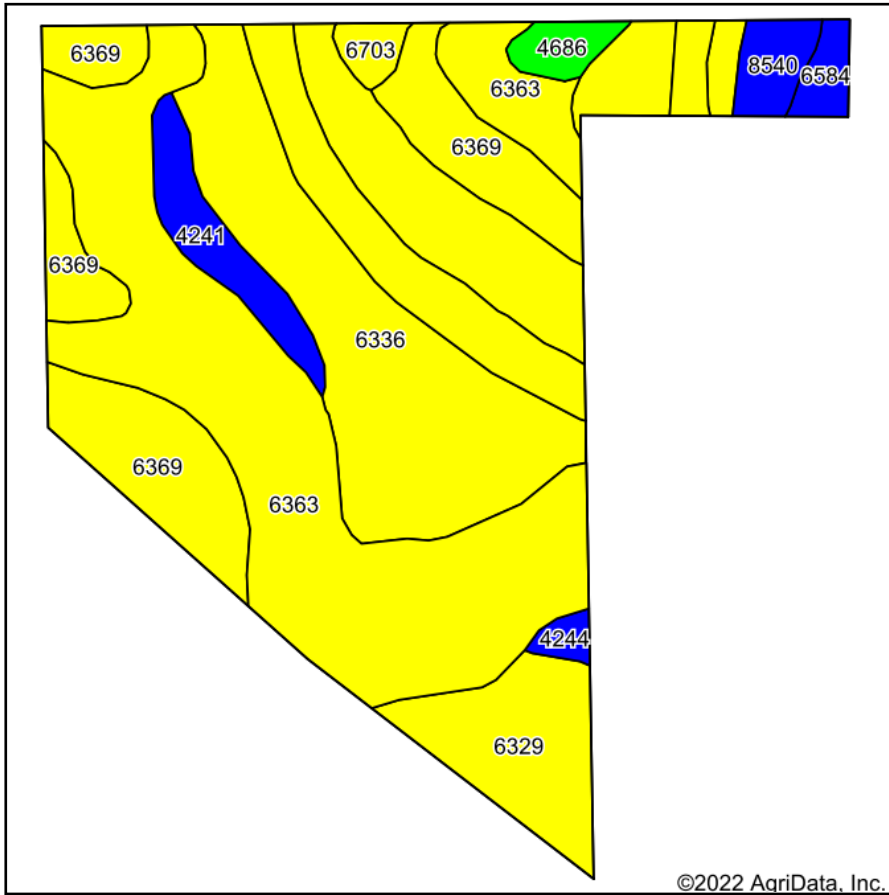


# Soils Map



State: **Nebraska**  
 County: **Pierce**  
 Location: **28-27N-3W**  
 Township: **Foster**  
 Acres: **200.2**  
 Date: **12/30/2022**



Soils data provided by USDA and NRCS.

©2022 AgriData, Inc.

© AgriData, Inc. 2021

www.AgriDataInc.com

Area Symbol: NE139, Soil Area Version: 21

Code	Soil Description	Acres	Percent of field	Non-Irr Class Legend	Non-Irr Class *c	Irr Class *c	Grain sorghum Bu	*n NCCPI Overall	*n NCCPI Corn	*n NCCPI Small Grains	*n NCCPI Soybeans
6363	Obert silt loam, frequently ponded	80.75	40.3%		VIw			19	9	19	11
6336	Lawet silt loam, 0 to 2 percent slopes, occasionally flooded	58.39	29.2%		IVw		43	62	46	32	62
6369	Orwet loam, rarely flooded	28.92	14.4%		IVw			34	32	24	34
6329	Lawet loam, occasionally flooded	13.53	6.8%		IVw	IVw		66	45	30	66
4241	Ord fine sandy loam, occasionally flooded	6.98	3.5%		IIw	IIw		41	39	30	41
8540	Ovina fine sandy loam, rarely flooded	3.51	1.8%		IIw	IIw		60	48	40	60
4686	Marlake loam, frequently ponded	2.67	1.3%		VIIIw			5	2	5	1
6584	Ortello fine sandy loam, terrace, 0 to 2 percent slopes	2.29	1.1%		Ile	Ile		45	45	40	43
6703	Thurman loamy fine sand, 2 to 6 percent slopes	1.93	1.0%		IVe	IVe		35	35	27	34
4244	Ord loam, occasionally flooded	1.23	0.6%		IIw	IIw		44	40	31	44
<b>Weighted Average</b>					<b>4.72</b>	<b>*-</b>	<b>12.5</b>	<b>*n 38.8</b>	<b>*n 28</b>	<b>*n 25.2</b>	<b>*n 35.5</b>

\*n: The aggregation method is "Weighted Average using all components"

\*c: Using Capabilities Class Dominant Condition Aggregation Method

\*-: Irr Class weighted average cannot be calculated on the current soils data due to missing data.

Soils data provided by USDA and NRCS.