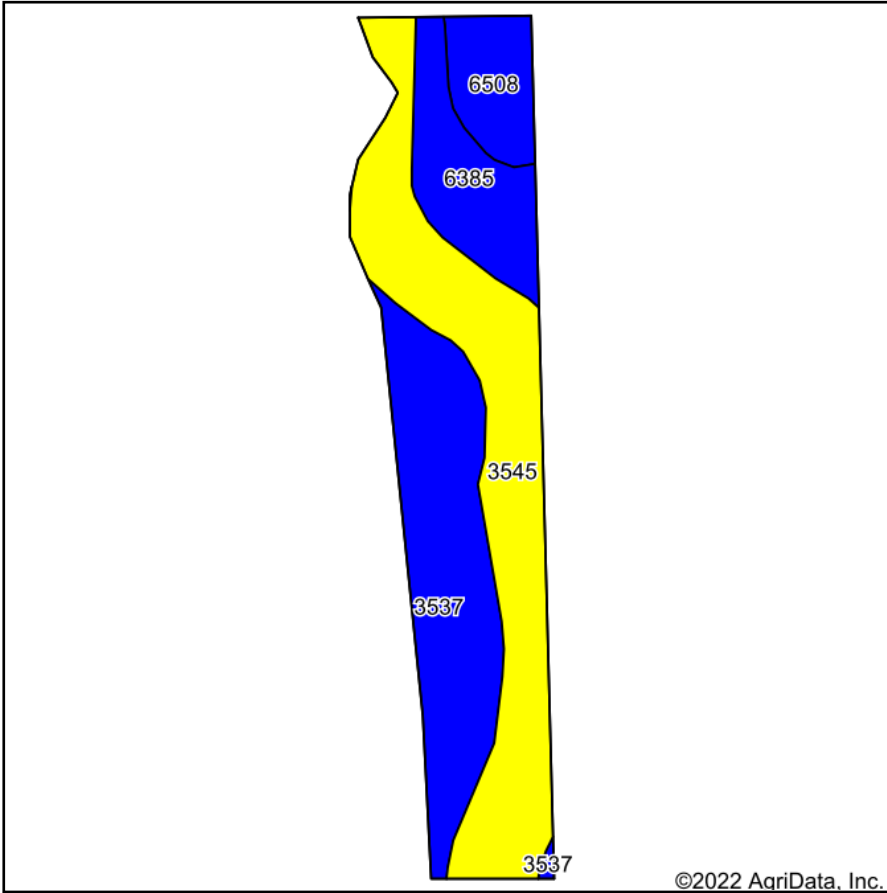
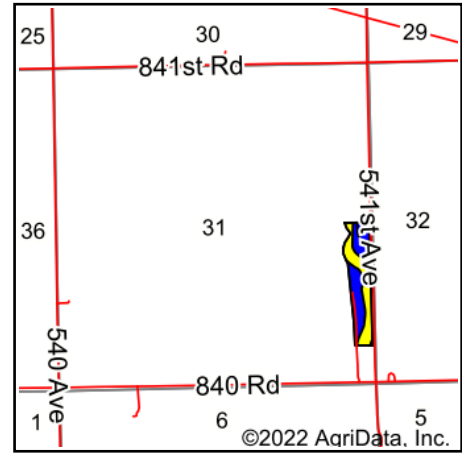


Soils Map



Soils data provided by USDA and NRCS.



State: **Nebraska**
 County: **Madison**
 Location: **32-24N-3W**
 Township: **Deer Creek**
 Acres: **16.29**
 Date: **11/9/2022**



Maps Provided By:



© AgriData, Inc. 2021

www.AgriDataInc.com



Area Symbol: NE119, Soil Area Version: 21

Code	Soil Description	Acres	Percent of field	Non-Irr Class Legend	Non-Irr Class *c	Irr Class *c	Grain sorghum Bu	Grain sorghum Irrigated Bu	*n NCCPI Overall	*n NCCPI Corn	*n NCCPI Small Grains	*n NCCPI Soybeans
3545	Hobbs silt loam, channeled, 0 to 2 percent slopes, frequently flooded	7.22	44.3%		VIw				41	41	20	39
3537	Gibbon silty clay loam, occasionally flooded	5.29	32.5%		IIw	IIw	87	116	71	49	38	71
6385	Shell silt loam, occasionally flooded	2.33	14.3%		IIw	IIw	85	130	74	72	57	74
6508	Blendon fine sandy loam, 0 to 2 percent slopes	1.45	8.9%		IIs	IIe	59	107	63	63	44	56
Weighted Average					3.77	*-	45.7	65.8	*n 57.4	*n 50	*n 33.3	*n 55.9

*n: The aggregation method is "Weighted Average using all components"

*c: Using Capabilities Class Dominant Condition Aggregation Method

*- Irr Class weighted average cannot be calculated on the current soils data due to missing data.

Soils data provided by USDA and NRCS.