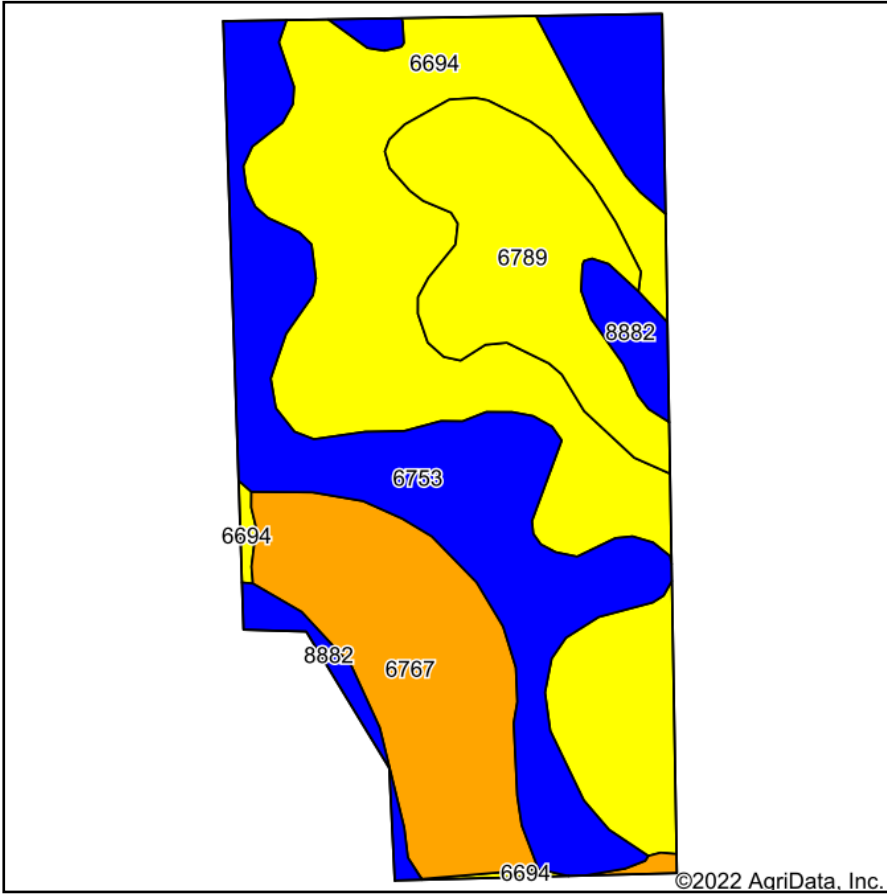
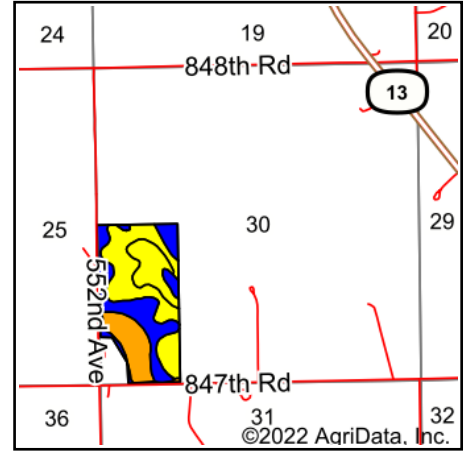


Soils Map



Soils data provided by USDA and NRCS.



State: **Nebraska**
 County: **Pierce**
 Location: **30-25N-1W**
 Township: **South Branch**
 Acres: **73.35**
 Date: **7/21/2022**



Maps Provided By:



© AgriData, Inc. 2021

www.AgriDataInc.com



Area Symbol: NE139, Soil Area Version: 20

| Code | Soil Description | Acres | Percent of field | Non-Irr Class Legend | Non-Irr Class *c | Irr Class *c | *n NCCPI Overall | *n NCCPI Corn | *n NCCPI Small Grains | *n NCCPI Soybeans |
|-------------------------|---|-------|------------------|----------------------|------------------|--------------|------------------|----------------|-----------------------|-------------------|
| 6694 | Crofton-Nora complex, 6 to 11 percent slopes, eroded | 27.27 | 37.2% | Yellow | IVe | IVe | 67 | 63 | 42 | 67 |
| 6753 | Nora silt loam, 2 to 6 percent slopes | 20.16 | 27.5% | Blue | IIe | IIIe | 78 | 68 | 47 | 77 |
| 6767 | Nora silty clay loam, 6 to 11 percent slopes | 12.57 | 17.1% | Orange | IIIe | IVe | 75 | 64 | 48 | 75 |
| 6789 | Crofton-Nora complex, 11 to 17 percent slopes, eroded | 10.35 | 14.1% | Yellow | IVe | | 64 | 60 | 40 | 64 |
| 8882 | Hord-Hobbs silt loams, 0 to 6 percent slopes | 2.80 | 3.8% | Blue | IIe | IIe | 72 | 63 | 50 | 72 |
| 6693 | Crofton-Nora complex, 2 to 6 percent slopes, eroded | 0.20 | 0.3% | Orange | IIIe | IIIe | 70 | 65 | 43 | 70 |
| Weighted Average | | | | | 3.20 | *- | *n 71.2 | *n 64.1 | *n 44.4 | *n 70.9 |

*n: The aggregation method is "Weighted Average using all components"

*c: Using Capabilities Class Dominant Condition Aggregation Method

*- Irr Class weighted average cannot be calculated on the current soils data due to missing data.

Soils data provided by USDA and NRCS.